



UNRIVALED PERFORMANCE. UNMATCHED DURABILITY. UNLIMITED POSSIBILITIES.

MOTORCYCLE APPLICATIONS

JACKETS
PANTS
GLOVES



Teiz Motorsports

SuperFabric.com

TABLE OF CONTENTS

03 INTRODUCTION

04 SUPERFABRIC® PROPERTIES

06 SUPERFABRIC® PROTECTION

07 EXAMPLE SUPERFABRIC® MATERIALS

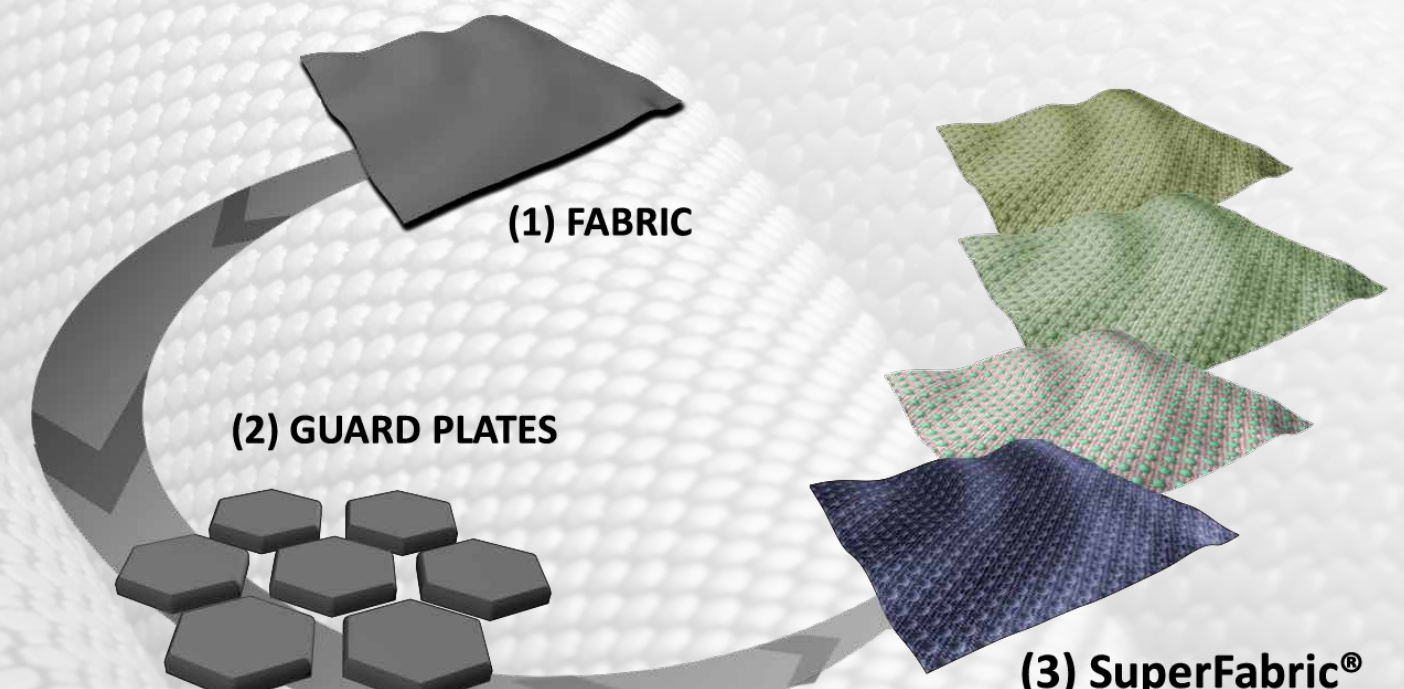
10 JACKETS | PANTS with SUPERFABRIC®

18 GLOVES with SUPERFABRIC®

24 CONTACT US

Introduction

SuperFabric® materials are created by taking ordinary fabrics and layering on tiny, hard armor plates. These plates (guard plates) become an integral part of the fabric, retaining a soft, fabric-like feel while providing a variety of performance features such as high abrasion resistance, durability, and stain resistance. There are more than 50 standard SuperFabric® materials available in addition to customization of color, patterns, and performance.

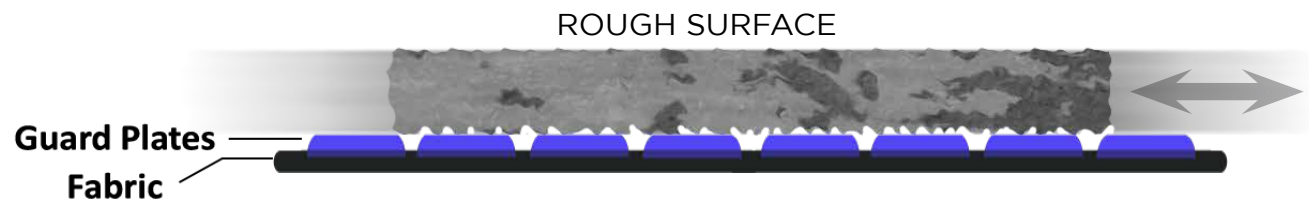


SuperFabric® for Motorcycle Apparel

- Performance
SuperFabric® materials are recognized by motorcycle apparel manufacturers for their outstanding abrasion and slash resistance, breathability, and stain resistance. SuperFabric® has materials that are extremely lightweight while still providing nice levels of performance using a variety of materials for the toughest apparel.
- Protection
SuperFabric® materials provide protective solutions for hands, legs, arms, feet, and body. Wherever a threat exists, SuperFabric® materials can provide an engineered solution.
- Comfort
What good is protection and performance without comfort? SuperFabric® materials are flexible, and breathable, allowing performance at the highest levels while helping to keep riders confident they are using proven protection.

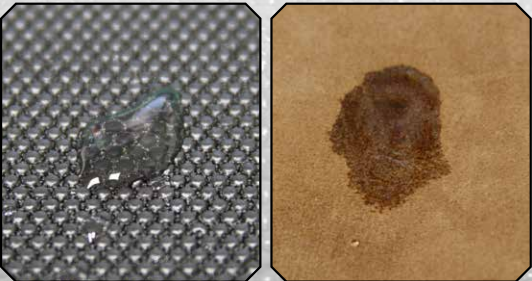
ABRASION RESISTANT

The tiny armor plating of SuperFabric® materials provides high levels of abrasion resistance, which extends the life of products and equipment.



QUICK DRYING

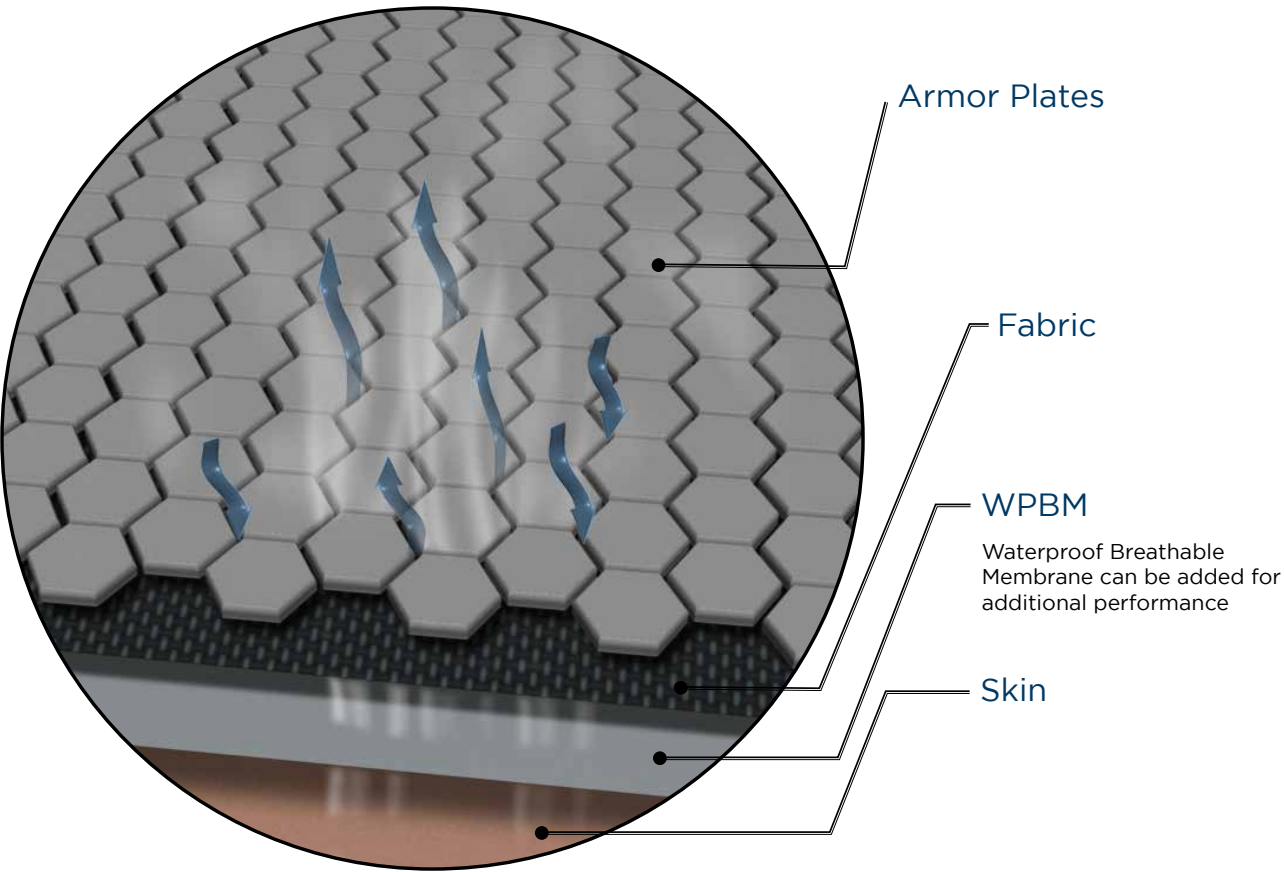
Most SuperFabric® materials are able to dry more than 10 times quicker than untreated leather. Dry means less weight and more comfort. Materials such as leather that are constantly exposed to water can rot, deteriorate, and crack, thereby shortening product life and performance.



SuperFabric® material Leather (suede)

WATER RESISTANT/ BREATHABLE

If it's not comfortable, who will wear it? If it does not get worn, what good is it? SuperFabric® materials allow air to pass through the small gaps between guard plates, making them surprisingly breathable.



SNAG RESISTANT

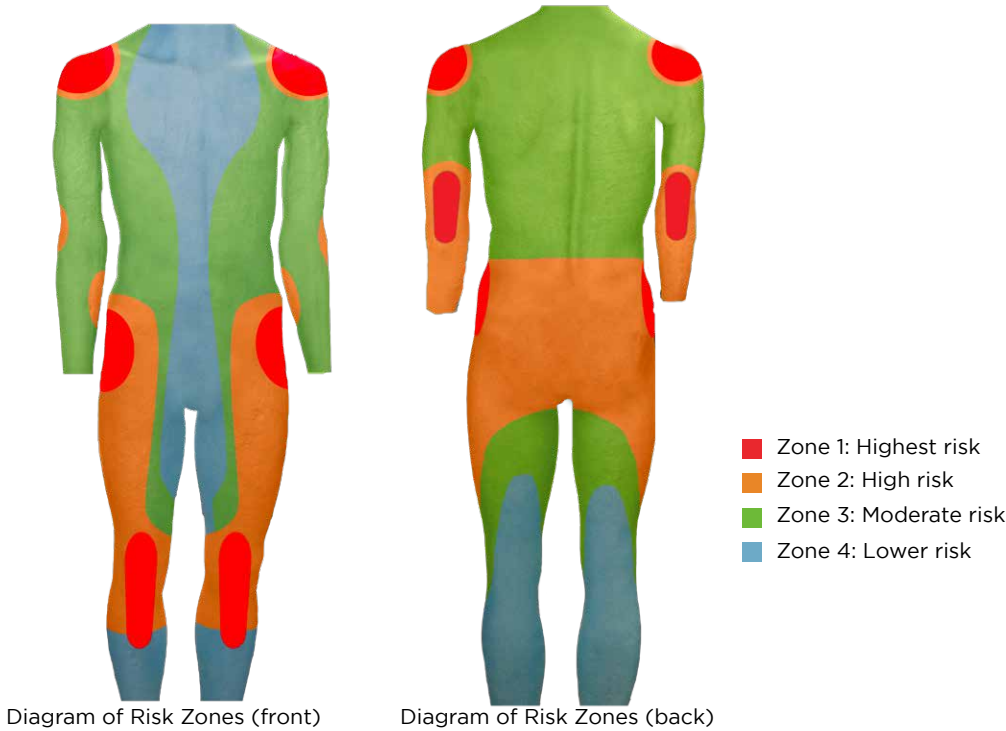
Knit materials, such as nylons, can easily snag on sharp objects, which not only diminishes their performance but looks as well. SuperFabric® materials are snag resistant with a surface that is more conducive to sliding, which can help prevent a falling rider from tumbling.

STAIN RESISTANT

A nice benefit of SuperFabric® materials is their incredible stain resistance which allows garments to continue looking and performing like new.

SuperFabric® PROTECTION

The illustrations below show the areas most likely to sustain injury in a motor-cycle accident. Manufacturers have chosen to use SuperFabric® in precisely those areas. Coincidence? We think not.



Per mile traveled in the USA in 2013, the number of deaths on motorcycles was over 26 times the number in cars.

SuperFabric® AVAILABLE

There are more than 50 standard SuperFabric® materials and many more special order materials available. These vary in performance, looks, and style.

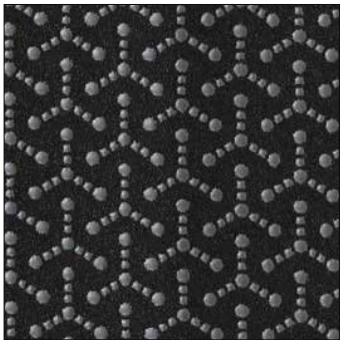
A FEW EXAMPLES



600100-960
Dolphin Gray
Penta 83/21-350
Black Poly 600D



600100-962
Mystic Black
Penta 83/21-350
Black Poly 600D



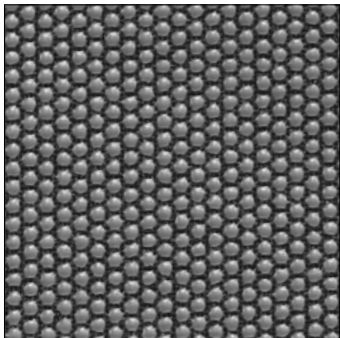
600188-900
Pewter Gray
Jax
Black Poly 100D



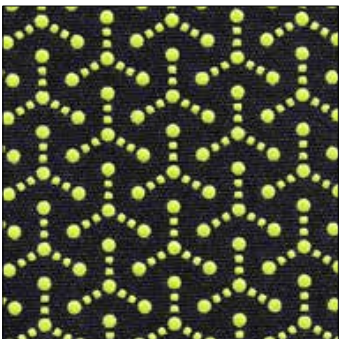
600256-900
Pewter Gray
XGP
Black Poly 100D



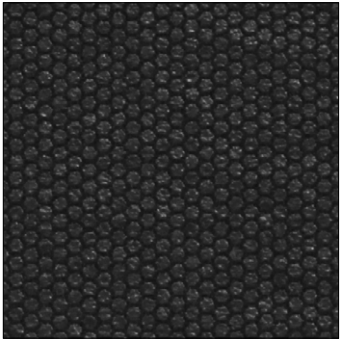
600256-905
Dusky Black
XGP
Black Poly 100D



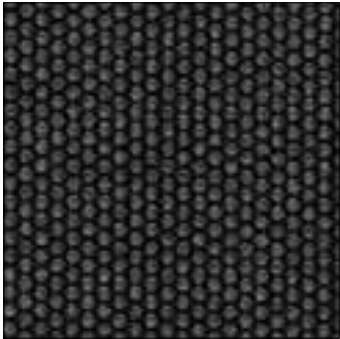
601050-620
Stormcloud Gray
Hex 80/18
Black Poly 600D



700196-089
Hi-Vis Yellow
Jax
Black JT Stretch 3-Layer



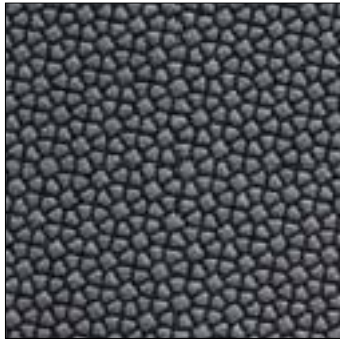
700149-700
Raven Black
Hex 60/10-200
Black Poly 100D



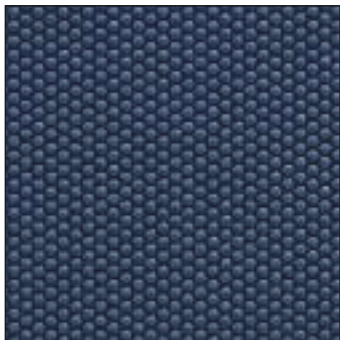
700149-800
Charcoal Gray
Hex 60/10-200
Black Poly 100D



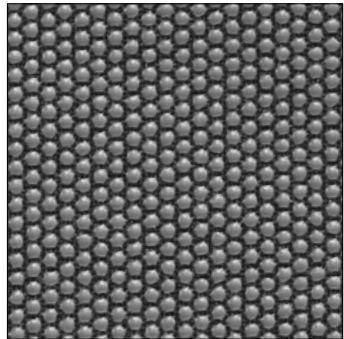
600260-905
Dusky Black
XGP
Black Poly 600D



600603-960
Dolphin Gray
Penta 83/21-350
Black Poly 600D



700665-910
Slate Blue
Hex 70/08-400
Black Poly 600D



601050-620
Stormcloud Gray
Hex 80/18
Black Poly 600D



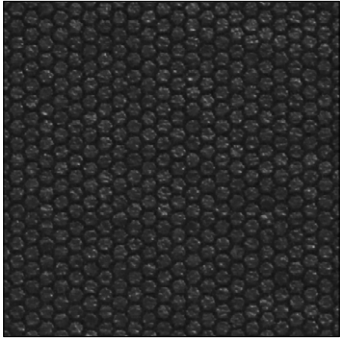
601050-905
Dusky Black
Hex 80/18
Black Poly 600D



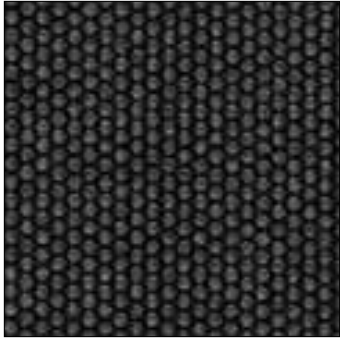
601070-925
Sandstone
Hex 80/14-400
Tan Poly 600D



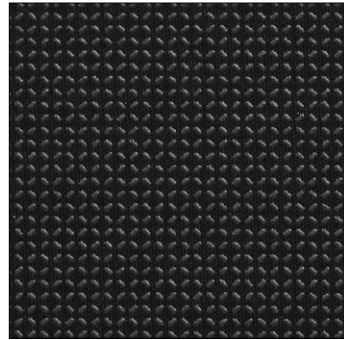
700106-905
Dusky Black
Round 80/40-300
Stretch Nylon



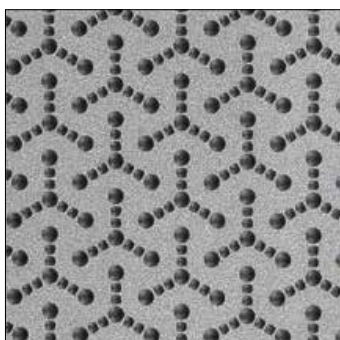
700149-700
Raven Black
Hex 60/10-200
Black Poly 100D



700149-800
Charcoal Gray
Hex 60/10-200
Black Poly 100D



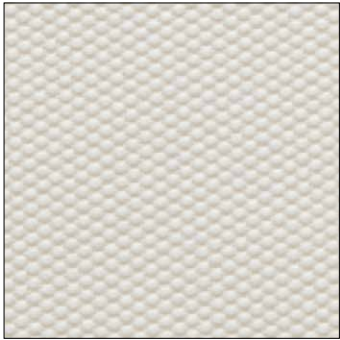
700180-905
Dusky Black
XGP
Black JT Stretch 3-Layer



702025-905
Dusky Black
Jax
Silver Reflective Fabric



700670-620
Stormcloud Gray
Hex 70/08-400
Black Poly 600D+Silicone



700300-722
Eggshell White
Hex 70/08-400
White Poly 600D



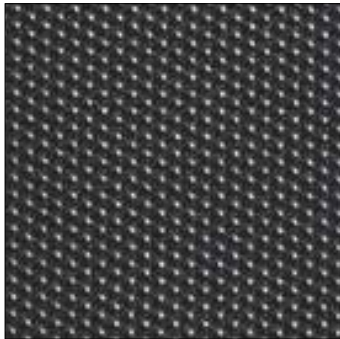
700538-700
Raven Black
Hex 50/05-200
Black Poly 100D



700538-800
Charcoal Gray
Hex 50/05-200
Black Poly 100D



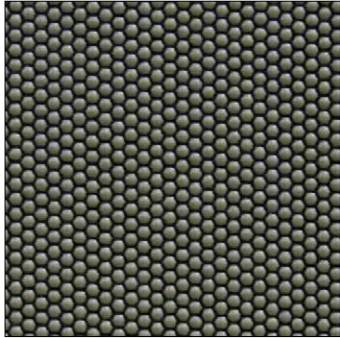
700665-620
Stormcloud Gray
Hex 70/08-400
Black Poly 600D



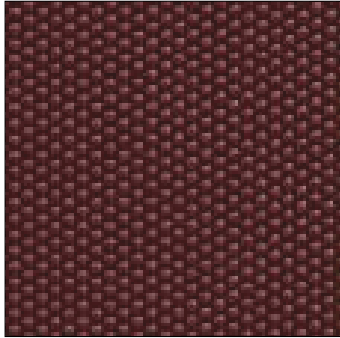
700665-720
Onyx Black
Hex 70/08-400
Black Poly 600D



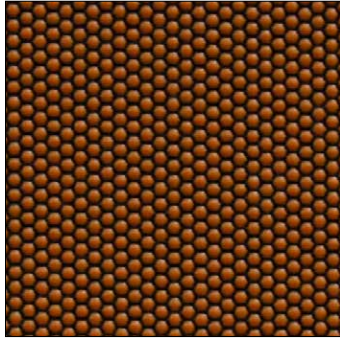
700665-780
Nutmeg
Hex 70/08-400
Black Poly 600D



700665-920
Mushroom
Hex 70/08-400
Black Poly 600D



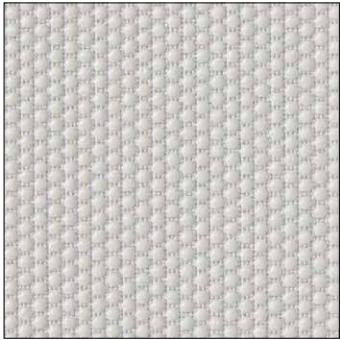
700665-930
Red Wine
Hex 70/08-400
Black Poly 600D



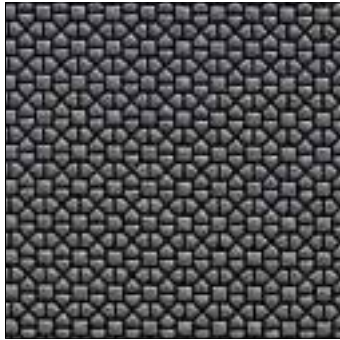
700665-953
Pumpkin
Hex 70/08-400
Black Poly 600D



700690-720
Onyx Black
Hex 80/14-400
Black Poly 600D



700695-722
Eggshell White
Hex 80/14-400
White Poly 600D



700810-935
Silver
Penta 83/11-400
Black Poly 600D

JACKETS | PANTS WITH SUPERFABRIC®

SuperFabric® is regarded as a premium, high performance fabric for motorcycle jackets. It is most often used in the elbows and the shoulders to help prevent severe abrasion injuries. Its air breathing, water resistance, and high durability properties are praised by riders and manufacturers alike.



KLIM Adventure Rally Jacket
Beautiful performance and design
with SuperFabric® are integrated in
the shoulders and elbow areas.



KLIM Adventure Rally Pants
Large coverage areas around knees
provides extreme abrasion resistance
and performance.



42 percent of two-vehicle fatal motorcycle crashes involved a vehicle turning left while the motorcycle was going straight, passing, or overtaking the vehicle

JACKETS | PANTS WITH SUPERFABRIC®



Victory Platinum Jacket
This jacket spares no expense at protecting the rider with heavy coverage of SuperFabric® in elbows and collar areas.



Victory Platinum Pants
A nice complement to the jacket, the Victory Pants offer superior protection with SuperFabric® in the knees.



Scorpion Intake Jacket
The Scorpion jacket takes a refined approach by combining areas of SuperFabric® in the shoulders and elbows.



JACKETS | PANTS WITH SUPERFABRIC®



TEIZ jackets are made with SuperFabric® in elbows and shoulders. TEIZ is a custom manufacturer of motorcycle apparel and designs their jackets and pants.



JACKETS | PANTS WITH SUPERFABRIC®



TRIUMPH jacket uses SuperFabric® in the elbow and shoulder areas. Heavy duty SuperFabric® is used for maximum abrasion protection.



Motocross accidents are most commonly associated with injuries to the extremities and closed head trauma. Although the overall mortality is low, the number of injuries is high, with a large proportion of patients requiring surgery.



GLOVES WITH SUPERFABRIC®

Gloves often provide the rider with the first line of defense in an accident. Hands can be the first point of contact during a crash. SuperFabric offers world-class protection in such areas as the palm, back of hand and even the wrist.

EXTREME ABRASION PROTECTION | SLIDE ENHANCED

Durability and abrasion resistance are high priorities when considering glove materials. Additionally, SuperFabric® is a very slide-enabling material. This allows slippage on the surface such as asphalt which helps prevent grabbing, twisting, and tearing of glove and hand.

GLOVES WITH SUPERFABRIC®

HELD is renowned for their innovation, performance, and style. They integrate SuperFabric® materials in a large array of gloves.



GLOVES WITH SUPERFABRIC®

Both Racer and Rukka provide solutions for protecting the wrist and palm by utilizing SuperFabric® materials in key zones.



ASSERO GEAR
Gloves with superior protection incorporate a very nice slide pad with SuperFabric®.





Facebook.com/SuperFabric



Twitter.com/SuperFabric



Linkedin.com/company/SuperFabric



SuperFabric.com

SuperFabric® materials are not puncture, abrasion, or cut proof, etc. SuperFabric® materials are available in a variety of configurations and intended to be matched with suitable applications. Branding agreement is needed for the use of SuperFabric® materials.

©Higher Dimension Materials, Inc. 2022

Higher Dimension Materials, Inc. is the owner of all copyrights in the text, graphics, and fabric designs shown in this information sheet. For more information on copyrights, please visit superfabric.com/legal.

SuperFabric® is a registered trademark of Higher Dimension Materials, Inc. in the United States.

Pat. 5906873, other patents pending.

HDM, Inc. USA

570 Hale Ave N
Oakdale, MN USA 55128
+001 651-730-6203
findoutmore@superfabric.com

HDM, Inc. KOREA

NO. 202, 94-7, Sinseol-dong,
Dongdaemun-Gu,
Seoul 02586 South Korea
Phone: 82-(0)70-7099-9596

HDM, Inc. SINGAPORE

1 Tampines North Drive 1
#01-38, T-Space Building
Singapore 528559
Phone: 65.6844.4012



SuperFabric.com

©Copyright HDM, Inc. 2022